

# ELIZA

AT ROYAL BAY

GROUND FLOOR

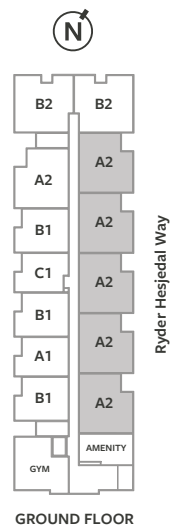
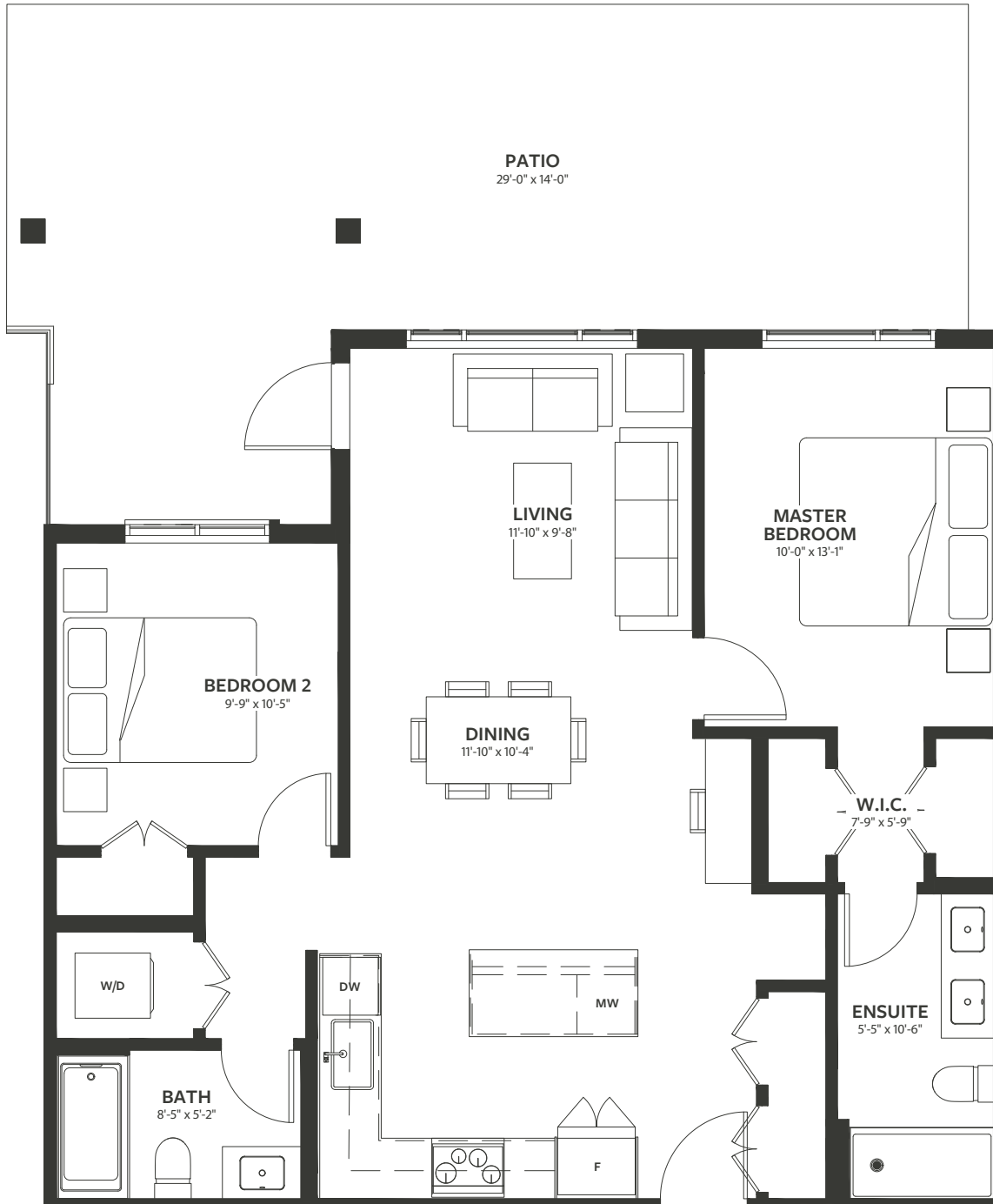
## Plan A2 East

2 BED + 2 BATH

INTERIOR / 941 SQ.FT.

EXTERIOR / 296 SQ.FT.

TOTAL / 1,237 SQ.FT.



ElizaCondos.com

PCREgroup | ISLAND REALM REAL ESTATE

This is currently not an offer for sale, any such offer will be made by way of a disclosure statement. In our continuing effort to improve and maintain the high standard of Eliza development, the developer reserves the right to modify or change plans, specifications, features and prices without notice. Renderings are an artist's conception and are intended as a general reference only. Please refer to disclosure statement for specific offering details. E. & O.E. Sales and Marketing provided by Island Realm Real Estate Ltd. [www.islandrealm.com](http://www.islandrealm.com)

# ELIZA

AT ROYAL BAY

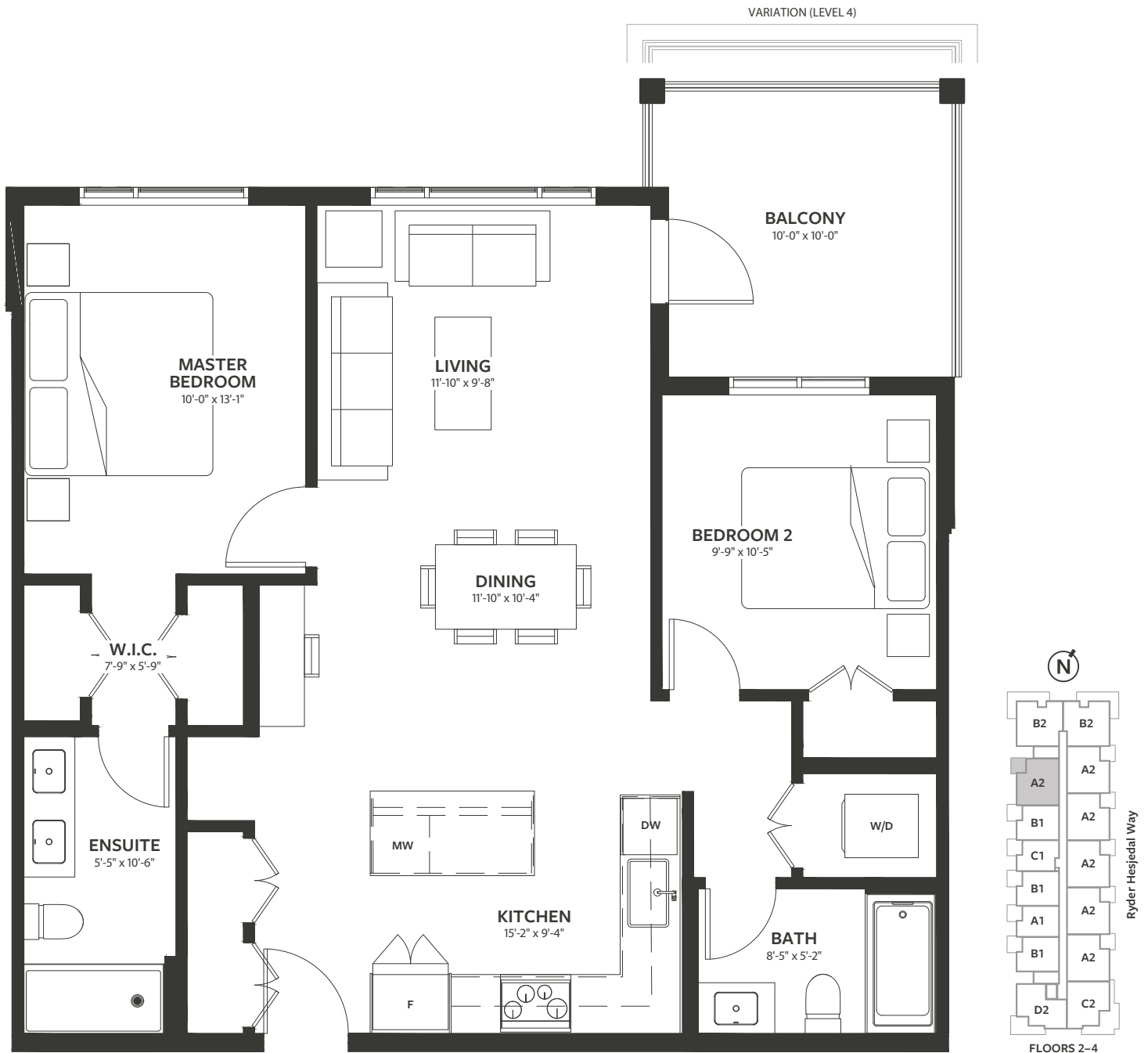
## Plan A2 West

2 BED + 2 BATH

INTERIOR / 941 SQ.FT.

EXTERIOR / 105 SQ.FT.

TOTAL / 1,046 SQ.FT.



ElizaCondos.com

PCREgroup | ISLAND REALM REAL ESTATE

This is currently not an offer for sale, any such offer will be made by way of a disclosure statement. In our continuing effort to improve and maintain the high standard of Eliza development, the developer reserves the right to modify or change plans, specifications, features and prices without notice. Renderings are an artist's conception and are intended as a general reference only. Please refer to disclosure statement for specific offering details. E. & O.E. Sales and Marketing provided by Island Realm Real Estate Ltd. [www.islandrealm.com](http://www.islandrealm.com)

# ELIZA

AT ROYAL BAY

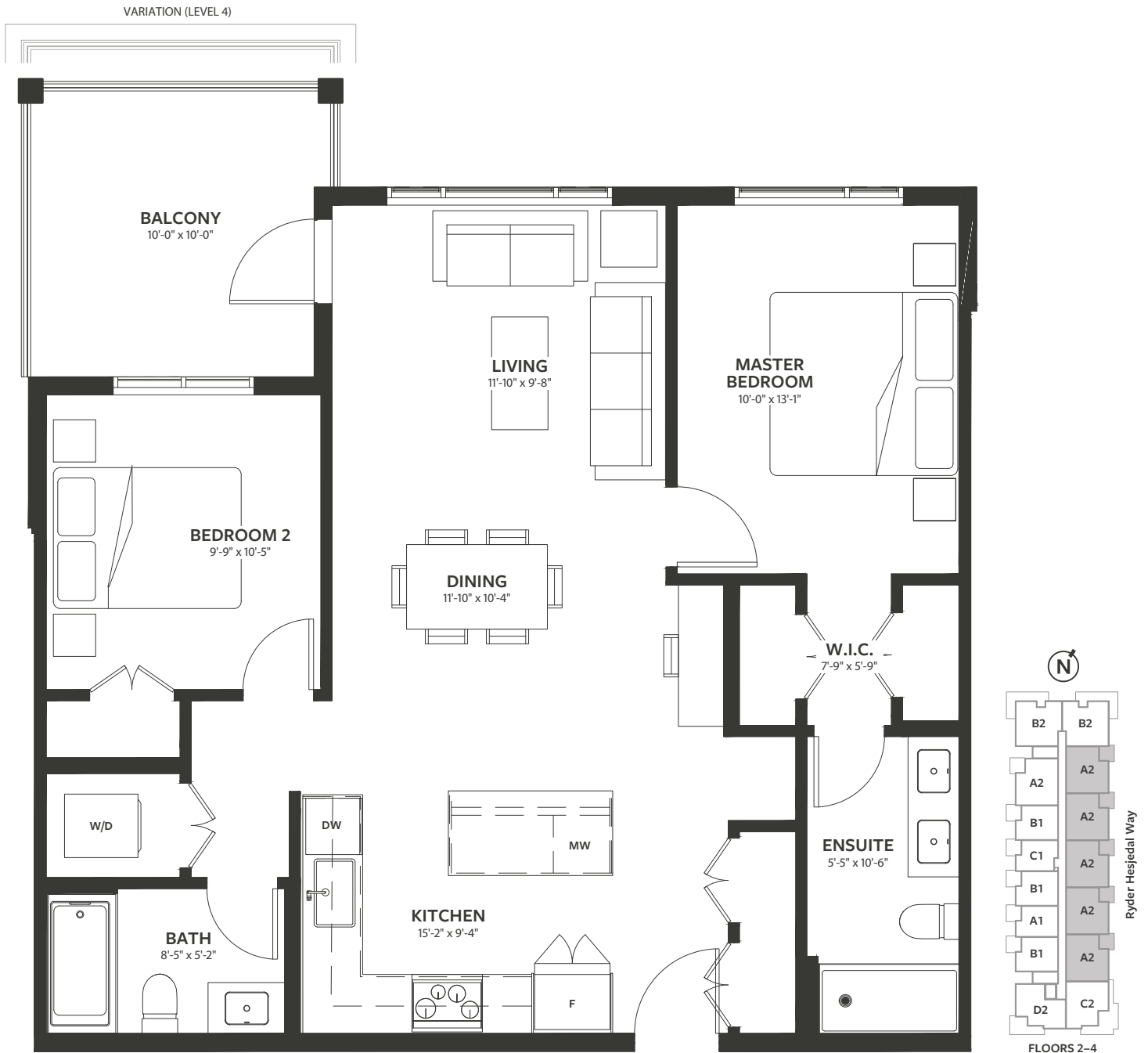
## Plan A2 East

2 BED + 2 BATH

INTERIOR / 941 SQ.FT.

EXTERIOR / 105 SQ.FT.

TOTAL / 1,046 SQ.FT.



[ElizaCondos.com](http://ElizaCondos.com)

PCREgroup | ISLAND REALM REAL ESTATE

This is currently not an offer for sale, any such offer will be made by way of a disclosure statement. In our continuing effort to improve and maintain the high standard of Eliza development, the developer reserves the right to modify or change plans, specifications, features and prices without notice. Renderings are an artist's conception and are intended as a general reference only. Please refer to disclosure statement for specific offering details. E. & O.E. Sales and Marketing provided by Island Realm Real Estate Ltd. [www.islandrealm.com](http://www.islandrealm.com)

# ELIZA

AT ROYAL BAY

GROUND FLOOR

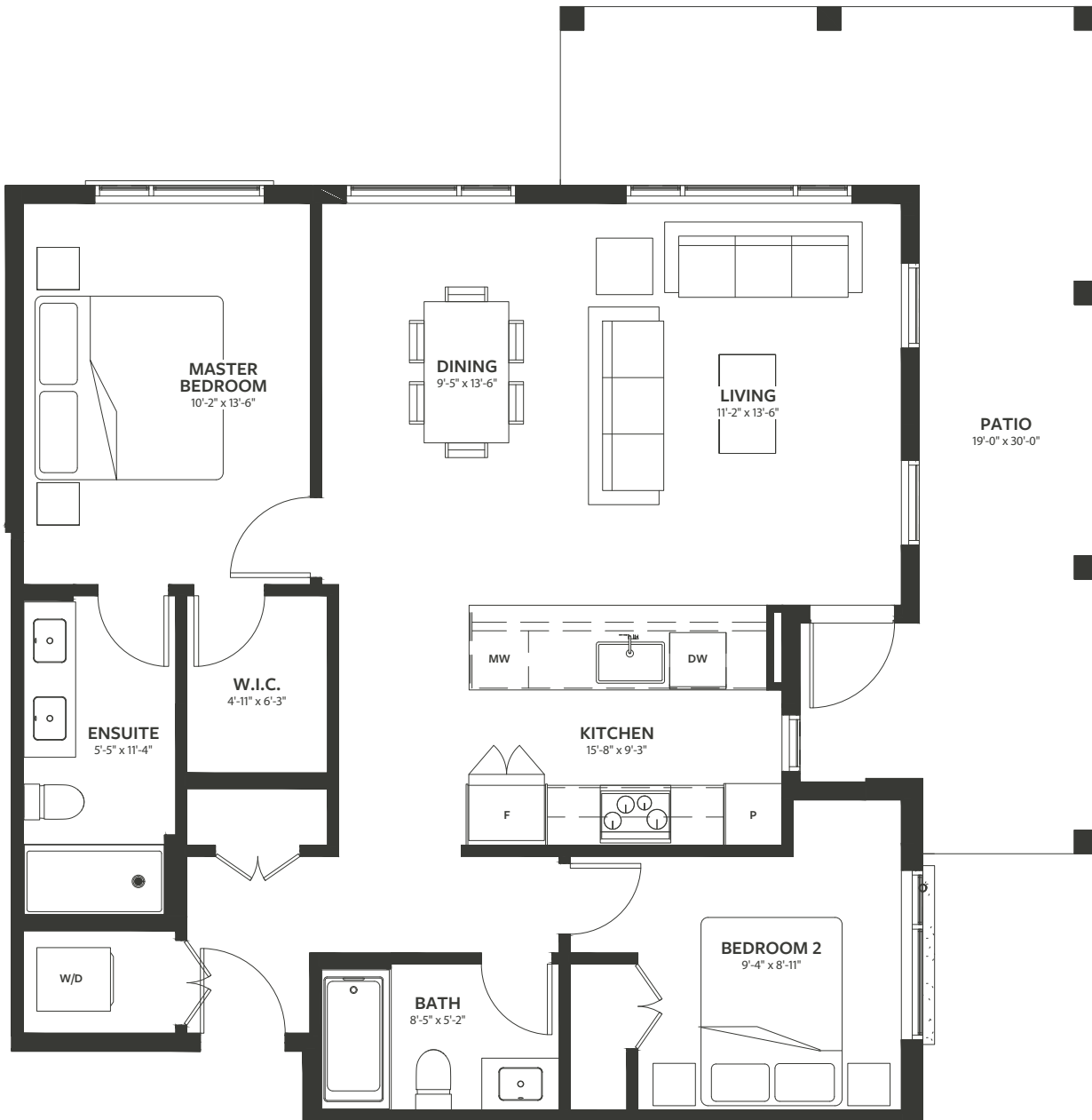
## Plan B2 West

2 BED + 2 BATH

INTERIOR / 1,013 SQ.FT.

EXTERIOR / 289 SQ.FT.

TOTAL / 1,302 SQ.FT.



ElizaCondos.com

PCREgroup | ISLAND REALM REAL ESTATE

This is currently not an offer for sale, any such offer will be made by way of a disclosure statement. In our continuing effort to improve and maintain the high standard of Eliza development, the developer reserves the right to modify or change plans, specifications, features and prices without notice. Renderings are an artist's conception and are intended as a general reference only. Please refer to disclosure statement for specific offering details. E. & O.E. Sales and Marketing provided by Island Realm Real Estate Ltd. [www.islandrealm.com](http://www.islandrealm.com)

# ELIZA

AT ROYAL BAY

GROUND FLOOR

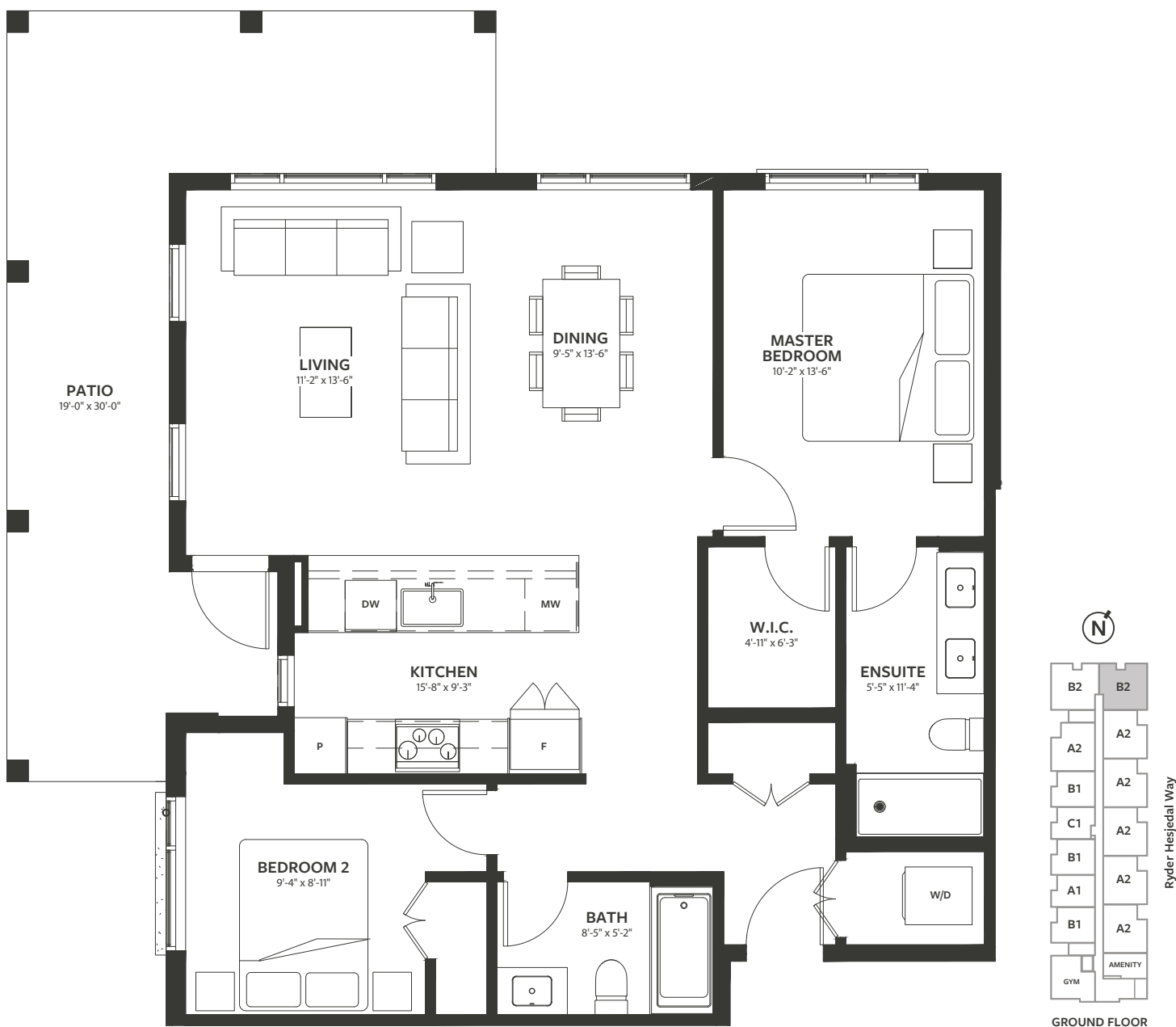
## Plan B2 East

2 BED + 2 BATH

INTERIOR / 1,013 SQ.FT.

EXTERIOR / 289 SQ.FT.

TOTAL / 1,302 SQ.FT.



ElizaCondos.com

PCREgroup | ISLAND REALM REAL ESTATE

This is currently not an offer for sale, any such offer will be made by way of a disclosure statement. In our continuing effort to improve and maintain the high standard of Eliza development, the developer reserves the right to modify or change plans, specifications, features and prices without notice. Renderings are an artist's conception and are intended as a general reference only. Please refer to disclosure statement for specific offering details. E. & O.E. Sales and Marketing provided by Island Realm Real Estate Ltd. [www.islandrealm.com](http://www.islandrealm.com)

# ELIZA

AT ROYAL BAY

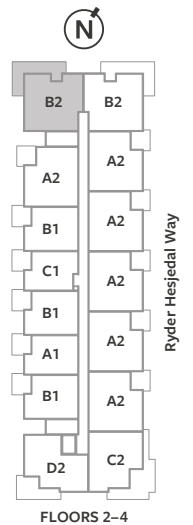
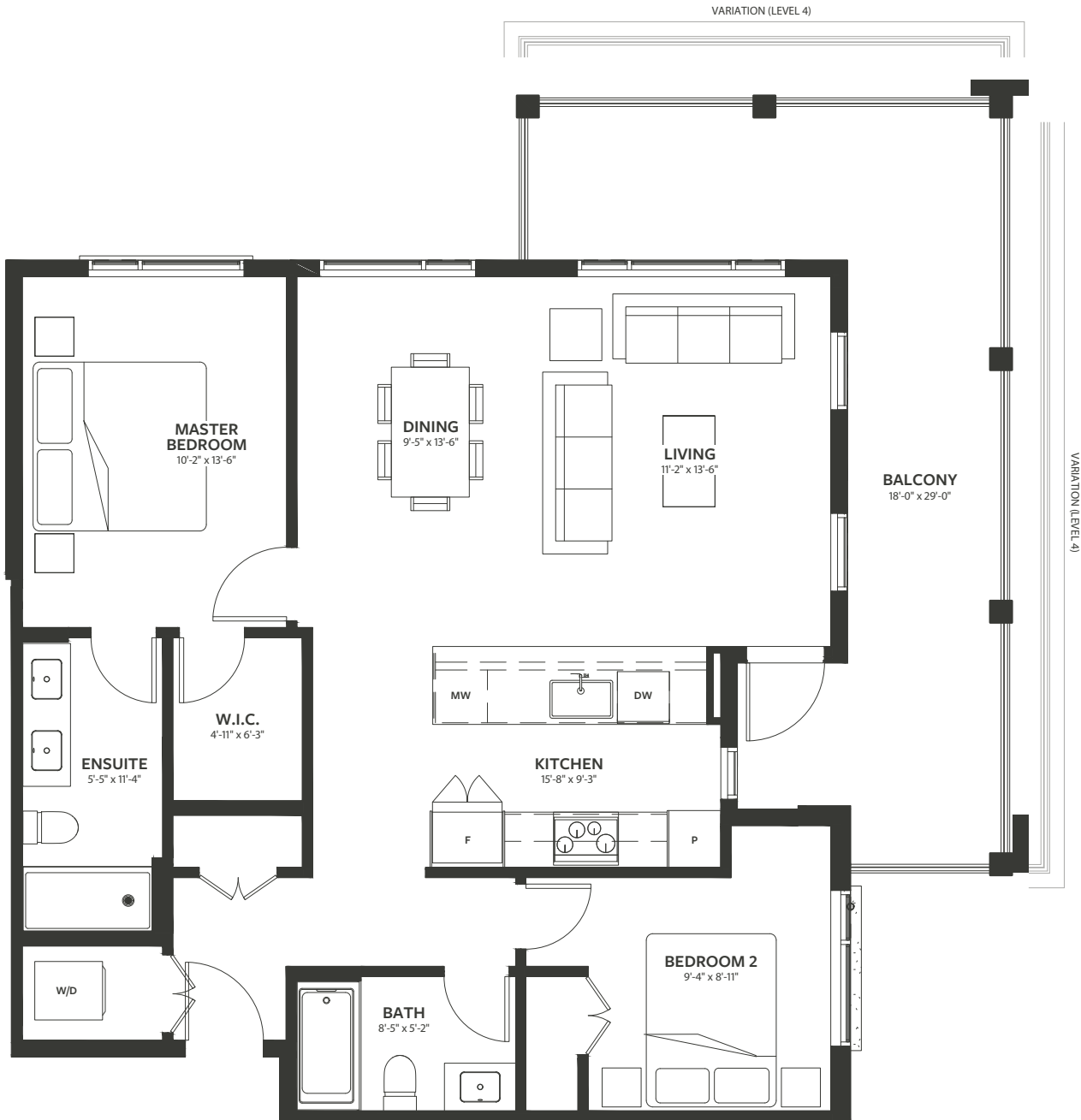
## Plan B2 West

2 BED + 2 BATH

INTERIOR / 1,013 SQ.FT.

EXTERIOR / 270 SQ.FT.

TOTAL / 1,283 SQ.FT.



ElizaCondos.com

PCREgroup | ISLAND REALM  
REAL ESTATE

This is currently not an offer for sale, any such offer will be made by way of a disclosure statement. In our continuing effort to improve and maintain the high standard of Eliza development, the developer reserves the right to modify or change plans, specifications, features and prices without notice. Renderings are an artist's conception and are intended as a general reference only. Please refer to disclosure statement for specific offering details. E. & O.E. Sales and Marketing provided by Island Realm Real Estate Ltd. [www.islandrealm.com](http://www.islandrealm.com)

# ELIZA

AT ROYAL BAY

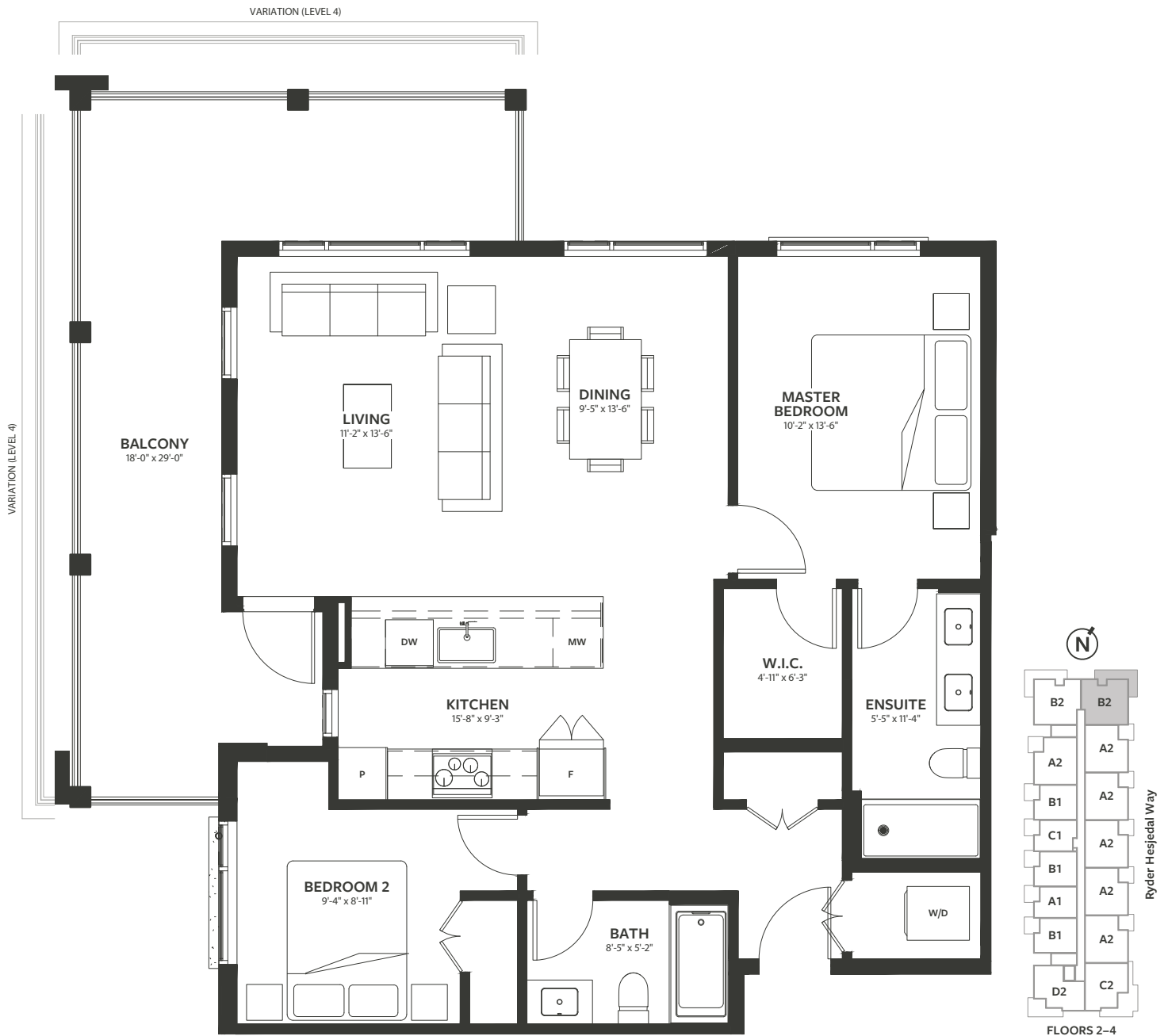
## Plan B2 East

2 BED + 2 BATH

INTERIOR / 1,013 SQ.FT.

EXTERIOR / 270 SQ.FT.

TOTAL / 1,283 SQ.FT.



ElizaCondos.com

PCREgroup | ISLAND REALM REAL ESTATE

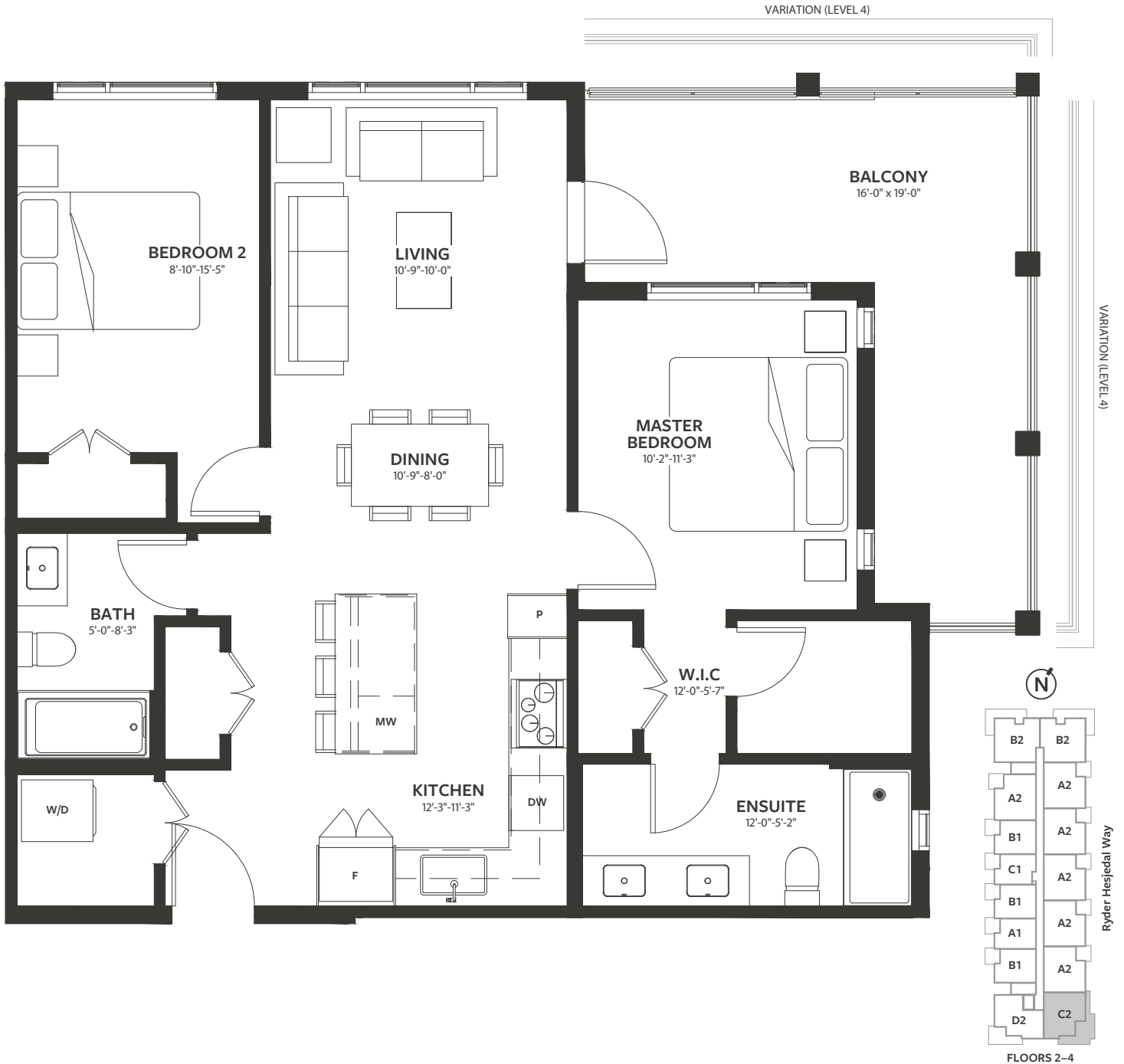
This is currently not an offer for sale, any such offer will be made by way of a disclosure statement. In our continuing effort to improve and maintain the high standard of Eliza development, the developer reserves the right to modify or change plans, specifications, features and prices without notice. Renderings are an artist's conception and are intended as a general reference only. Please refer to disclosure statement for specific offering details. E. & O.E. Sales and Marketing provided by Island Realm Real Estate Ltd. [www.islandrealm.com](http://www.islandrealm.com)

# ELIZA

AT ROYAL BAY

## Plan C2

2 BED + 2 BATH  
INTERIOR / 908 SQ.FT.  
EXTERIOR / 178 SQ.FT.  
TOTAL / 1,086 SQ.FT.



ElizaCondos.com

PCREgroup | ISLAND REALM  
REAL ESTATE

This is currently not an offer for sale, any such offer will be made by way of a disclosure statement. In our continuing effort to improve and maintain the high standard of Eliza development, the developer reserves the right to modify or change plans, specifications, features and prices without notice. Renderings are an artist's conception and are intended as a general reference only. Please refer to disclosure statement for specific offering details. E. & O.E. Sales and Marketing provided by Island Realm Real Estate Ltd. [www.islandrealm.com](http://www.islandrealm.com)



# ELIZA

AT ROYAL BAY

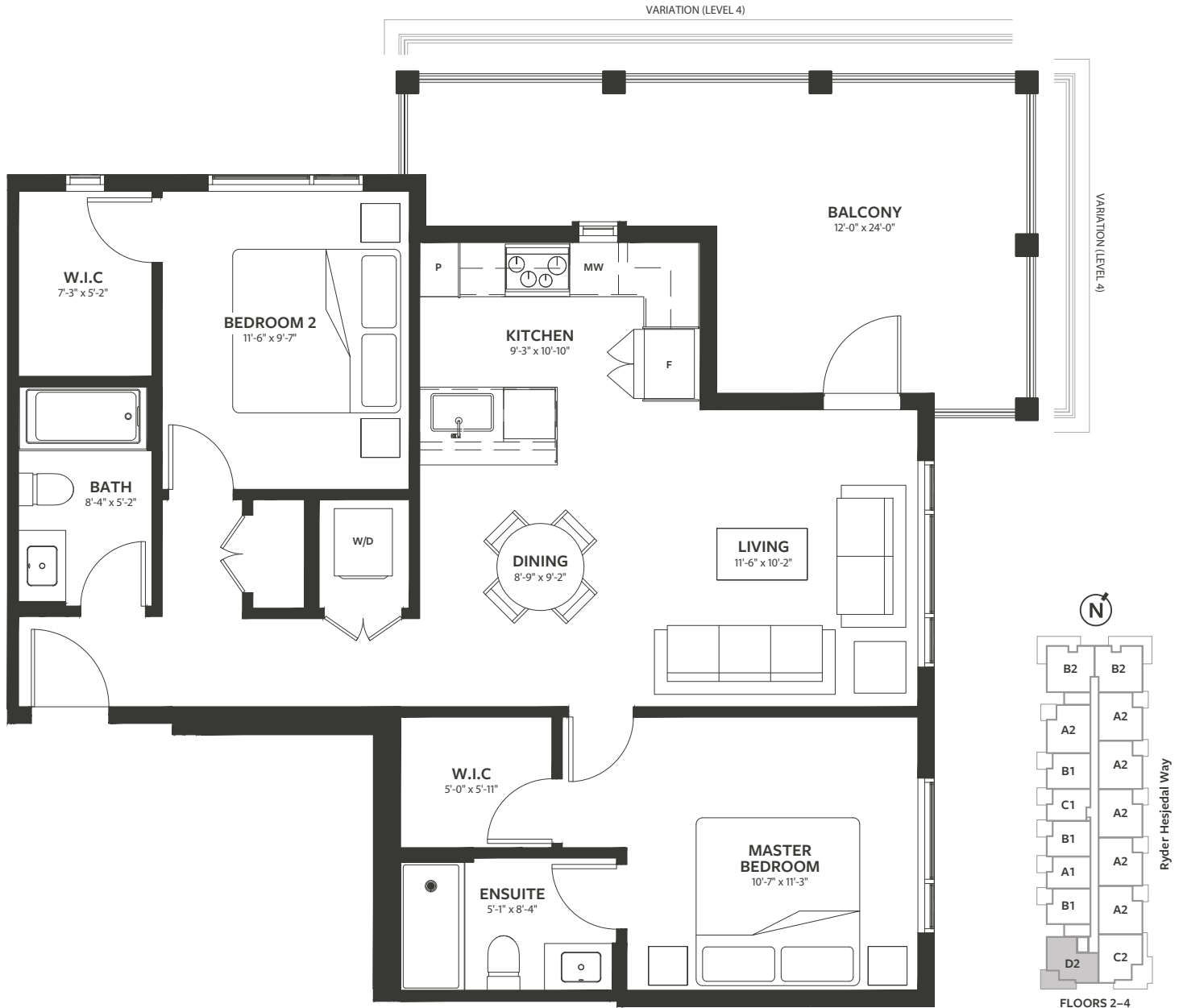
## Plan D2

2 BED + 2 BATH

INTERIOR / 896 SQ.FT.

EXTERIOR / 213 SQ.FT.

TOTAL / 1,109 SQ.FT.



ElizaCondos.com

PCREgroup | ISLAND REALM  
REAL ESTATE

This is currently not an offer for sale, any such offer will be made by way of a disclosure statement. In our continuing effort to improve and maintain the high standard of Eliza development, the developer reserves the right to modify or change plans, specifications, features and prices without notice. Renderings are an artist's conception and are intended as a general reference only. Please refer to disclosure statement for specific offering details. E. & O.E. Sales and Marketing provided by Island Realm Real Estate Ltd. [www.islandrealm.com](http://www.islandrealm.com)



AT ROYAL BAY

# FEATURES & FINISHES

## MODERN OCEANSIDE LIVING

- A collection of 58 elegant homes, including 1-bedroom floorplans of approximately 599 to 701 square feet, and 2-bedroom floorplans of approximately 896 to 1013 square feet
- Located in the seaside community of Royal Bay, within the Greater Victoria area
- West Coast Modern architecture designed by the internationally-recognized Rositch Hemphill Architects, one of Vancouver's top architectural firms
- Professionally designed interiors by award-winning Proscenium Architecture & Interiors, Inc.
- Choose from two sophisticated designer colour palettes: Seaside and Summit
- Spacious living areas with expansive windows and finely crafted cabinetry
- Master ensuite baths and walk-in closets
- Ocean views from east facing homes on the third and fourth floors
- Select Signature Series homes on the top floor feature vaulted 14'6" ceilings
- High quality vinyl flooring throughout main living areas and bedrooms
- Full size front loading washer and dryer
- Lush outdoor green space planted with deciduous and evergreen foliage

## SLEEK AND MODERN KITCHENS, FOR THE CHEF

- Large quartz islands ideal for entertaining
- Stainless steel appliances including:
  - High-end induction cooktop
  - Wall oven
  - Dishwasher
  - Built-in microwave
- Matte black faucets and hardware
- Undermount kitchen sink set in quartz countertops
- Two-toned designer custom cabinetry
- Under-the-cabinet task lighting
- Ceramic tile backsplash



## BATHROOMS LIKE AN AT-HOME SPA

- Matte black fixtures
- Quartz countertops
- Porcelain tile flooring
- Walk-in shower in primary ensuites
- Shower/tub combos tiled in large-format porcelain in all other bathrooms

## CONVENIENCE & PEACE OF MIND

- Air conditioning in every home
- EV charger-ready on select parking stalls
- Secure, fobbed building entry
- New Home Warranty provided by National Home Warranty



- Amenities include:
  - Convenient onsite fitness centre
  - Rooftop patio with firepit and BBQ
  - Large outdoor green spaces with picnic tables
  - Lounge / Amenity room
  - Community vegetable garden plots
- Walking distance to The Commons, for:
  - Quality Foods
  - Cascadia Liquor
  - Plus a variety of retail and dining options
- Located within steps to the beach and trails



ElizaCondos.com

PCREgroup | ISLAND REALM REAL ESTATE

This is currently not an offer for sale, any such offer will be made by way of a disclosure statement. In our continuing effort to improve and maintain the high standard of Eliza development, the developer reserves the right to modify or change plans, specifications, features and prices without notice. Renderings are an artist's conception and are intended as a general reference only. Please refer to disclosure statement for specific offering details. E. & O.E. Sales and Marketing provided by Island Realm Real Estate Ltd. [www.islandrealm.com](http://www.islandrealm.com)